

# HAPPY D-TYPE

LIFTING HEAVY  
CARGO FOR  
WORLDWIDE  
TRANSPORT



**BIG LIFT**





HAPPY D-TYPE



The five Happy D-type vessels are the latest additions to the BigLift fleet. Balancing lifting capacity and cargo space, the vessels are a valuable asset in the heavy lift and project cargo market. The highest Finnish Ice class and open sailing capabilities add significantly to this market.

With their two times 400 mt main and 120 mt forward cranes the vessels have a combined lifting capacity of 800 mt. Due to the

dimensions of the ship there is no need for a stability pontoon or other measures. The crane operations are supported by an anti heel system, allowing fast crane operations. The open sailing notation offers the possibility to carry high, heavy or voluminous cargo on the tank top.

To support the education of young officers, the Happy D-types have a trainee bridge and trainee accommodation installed.

BigLift's in house engineering and operations staff supports the vessels with thorough preparations of all cargo operations and voyages. Critical operations are often simulated beforehand to ensure safe and reliable operations.



# HAPPY D-TYPE

HAPPY DELTA, HAPPY DIAMOND, HAPPY DOVER, HAPPY DRAGON, HAPPY DYNAMIC

## HATCH OPENINGS AND ALLOWABLE LOADS

<b>HATCH OPENINGS</b>		
Weather deck	hold 1	25.6 x 18.3 m
	hold 2	70.4 x 18.3 m
Tween deck	hold 1	25.6 x 17.8 m
	hold 2	63.9 x 17.8 m

<b>ALLOWABLE LOADS</b>		
Weather deck hatch covers		3.6 t/m <sup>2</sup>
Tween deck hatch covers		5.5 t/m <sup>2</sup>
Tank top		20.0 t/m <sup>2</sup>

<b>FLOOR SPACE</b>		
Weather deck		2,560 m <sup>2</sup>
	hold 1	456 m <sup>2</sup>
Tween deck	hold 2	1,253 m <sup>2</sup>
	hold 1	398 m <sup>2</sup>
Tank top	hold 2	1,090 m <sup>2</sup>

## CRANES

2 x 400 mt + 1 x 120 mt

**COMBINABLE**  
800 mt

**AUXILIARY HOIST**  
50 mt SWL

## PRINCIPAL DIMENSIONS

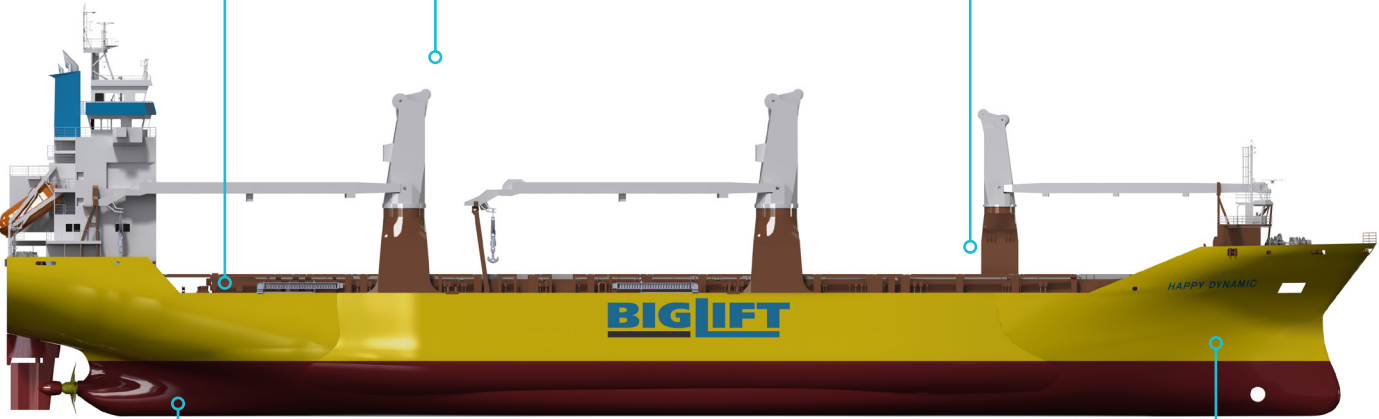
Length overall	156.93 m
Breadth moulded	25.60 m
Breadth extreme	25.72 m
Height in hold	13.35 m
Summer draft	10.32 m

## REGISTRATION

The Netherlands

## CLASS

Lloyds Register X100A1, Iceclass 1A (Finnish-Swedish Ice class rules), Strengthened for heavy cargoes, LA, LI, NAV1, \*IWS, XLMC, UMS, with descriptive notes: PCWBT, BWMP, SCM



## MAIN ENGINE

Wärtsilä	8400 kW
Bowthruster	850 kW
Service speed	17 kn at draft 7 m

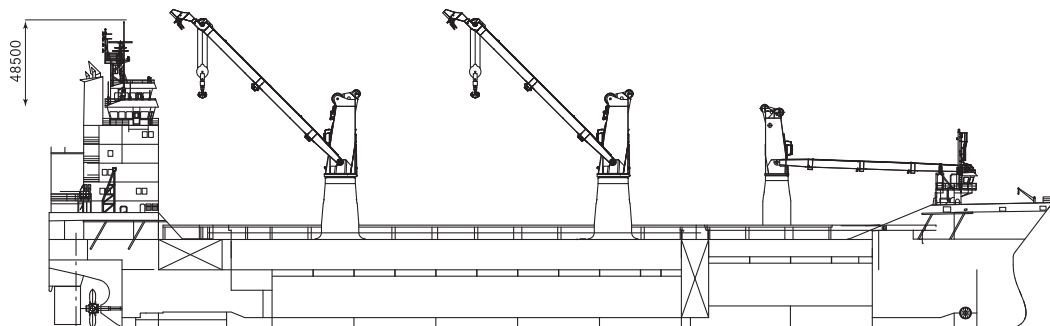
## CAPACITY

Grain = bale	20,892 m <sup>3</sup>
If tween deck installed	19,192 m <sup>3</sup>

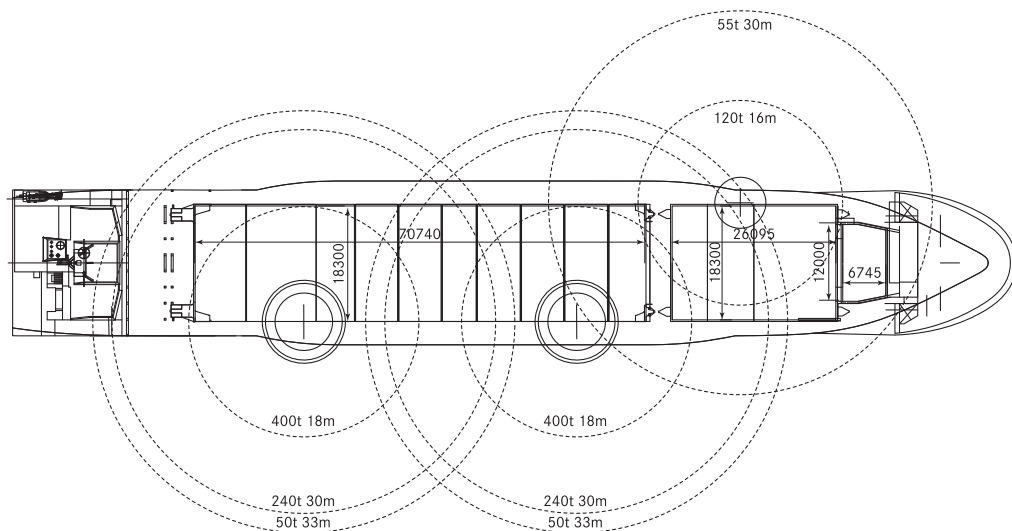
## DEADWEIGHT

At Summer (sea water) draft  
17,518 mton inc. tween deck hatch covers, pillars

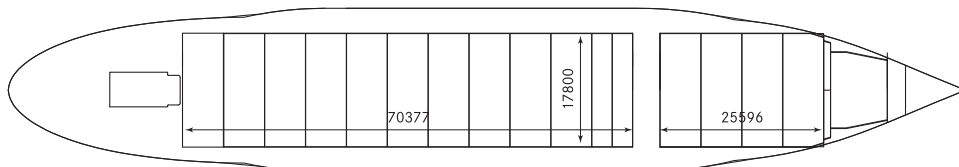
# HAPPY D-TYPE



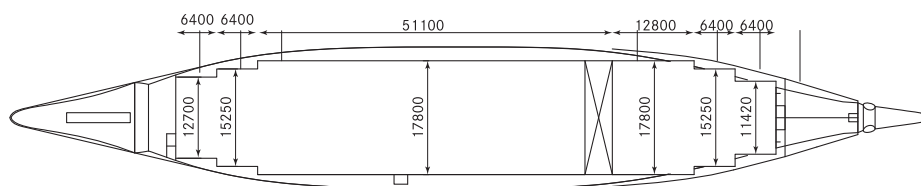
Side View



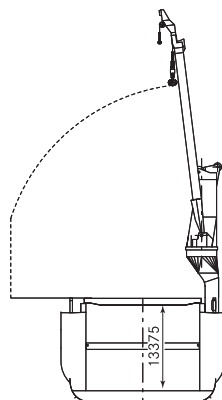
Weatherdeck



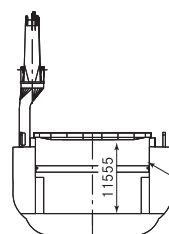
Tweendeck



Tanktop



CROSS SECTION  
HOLD 2



CROSS SECTION  
HOLD 1

Tween deck hatches  
adjustable in height

Cross section

# HAPPY D-TYPE

<b>Class</b>	LRS ✕100 A1, Ice class 1A (Finnish/Swedish) Strengthened for heavy cargoes LA, LI, NAV1, *IWS, XLMC, UMS		
<b>Principal Dimensions</b>	Length overall	156.93 m	
	Length p.p.	147.75 m	
	Breadth moulded	25.60 m	
	Breadth extreme	25.72 m	
	Summer draft	10.32 m	
<b>Deadweight</b>	Summer (sea water)	17,518 mton	
<b>Tonnage</b>	GT	International 14,784	Panama -
	NT	6,070	13,002
<b>Capacity</b>	Grain = bale	20,892 m³	if tween deck installed, 19,192 m³
<b>Floor space</b>	Weather deck	2,560 m²	
	Tween deck	Hold 1 456 m²	
		Hold 2 1,253 m²	
	Tank top	Hold 1 398 m²	
		Hold 2 1,090 m²	
<b>Hatch openings</b>	Weather deck	Hold 1 25.6 x 18.3 m	sailing with open hatches possible
		Hold 2 70.4 x 18.3 m	
	Tween deck	Hold 1 25.6 x 17.8 m	
		Hold 2 63.9 x 17.8 m	
<b>Heights</b>	Tween deck	Hold 1 3.95 m	
		Hold 2 3 heights	9.00, 5.79 or 2.65 m
	Lower hold	Hold 1 6.48 m	
		Hold 2 3 heights	3.27, 6.48 or 9.62 m
	Total in hold	13.35 m	(tween decks not installed)
<b>Allowable loads</b>	Weather deck hatch cover	2.6/3.6 t/m²	with pillars 12.5 t/m²
	Tween deck hatch cover	5.5 t/m²	with pillars 12.5 t/m²
	Tank top	20 t/m²	
<b>Cranes</b>	Combinable	800 mt	SWL
	Situated on starboard side	2 x 400 mt	SWL
		1 x 120 mt	SWL
	Auxiliary hoist	50 mt	SWL
<b>Main engine</b>	Wärtsilä 8L46C	8,400 kW	
	Bowthruster	850 kW	
	Speed	17.0 kN	(at 7m draft)
<b>Container capacity</b>	1091 TEU		

## HAPPY D-TYPES

Happy Delta	Amsterdam	The Netherlands	2011
Happy Diamond	Amsterdam	The Netherlands	2011
Happy Dover	Amsterdam	The Netherlands	2011
Happy Dragon	Amsterdam	The Netherlands	2011
Happy Dynamic	Amsterdam	The Netherlands	2011

These particulars are believed to be correct, but without guarantee, and they must not be used as basis for Charter Parties or contracts without Owners' explicit written authority.





Radarweg 36  
1042 AA Amsterdam

P.O. Box 2599  
1000 CN Amsterdam

t. +31 (0) 20 - 448 83 00  
f. +31 (0) 20 - 448 83 33

info@bigliftshipping.com  
www.bigliftshipping.com